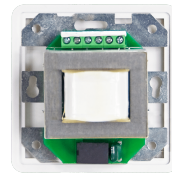
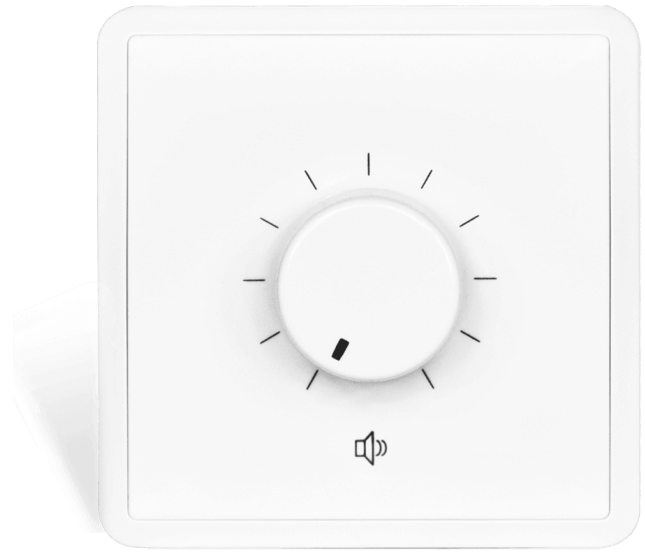


Product information:

The VC3102 is a 100 Volt volume controller capable of handling a power up to 100 Watt. The volume is adjustable with a rotatable dial in 11 steps of 3 dB. It is equipped with a relay and separate input for the reception of 24V priority signals. This means that when a priority signal occurs, the volume will be automatically switched to maximum level. This can be very useful for emergency and evacuation messages. Due to its slim and good looking design, these volume controls will blend into all kinds of different environments or interiors. The construction is made of sturdy ABS and therefore suitable for big projects in industrial buildings as well as standard home interiors. The dimensions are 80 mm x 80 mm, and a built-in depth of 46 mm is required. The connections are made at the back with screw terminal blocks.

Applications:

- Corporate
- Residential



System specifications:

Peak power handling	200 W
Program power handling	100 W
Max. operation Voltage	100 V
Attenuation	11 x 3 dB
Priority relay	24 V / 25 mA

Product Features:

Dimensions		80 x 80 x 50 mm (W x H x D)
Built-in depth		46 mm
Weight		0.340 kg
Construction		ABS
Colours		White
Accessories	Optional	WB3102/FS Flush mount wall box WB3102/SW Surface mount wall box

Variants:

- VC3102/W - White version

Shipping & Ordering:

Packaging	Cardboard box
Shipping weight & volume	0.370 kg - 0.0008 Cbm