

BCA54 is compact single slot wireless module for MCR54 quad receiver. It allows you to use the MRC54 4-channel receiver and move around freely without the need for power cables.



**Up to 11 hours  
of autonomy**

Allows to work for a full day without having to change the battery



**Versatile  
connectivity**

Back audio connectors (analogue & AES3) and external power supply



**Portable  
Unit**

4 wireless channels in a small and light package



**Rugged  
metal frame**

Light metal frame with optimized heatsink for improved performances

**OTHER FEATURES**

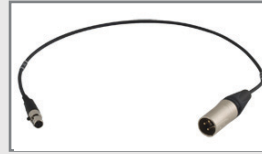
- Compatible with the RCC2040 battery guarantees a long life: you can forget about having to change the battery for a whole day!
- The outputs on the back allow you a versatile use in analogue or digital AES3.



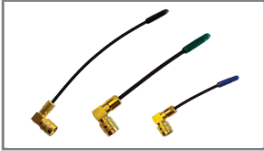
**ACCESSORIES & RELATED**



**Item: CAM50-3**  
AF cable (50 cm),  
mini XLR-5F / 2 XLR-3M connectors



**Item: CAM50-41**  
AF cable (50 cm),  
mini XLR-5F / 1 XLR-3M connector  
Line 1 feed XL3-M



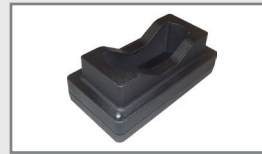
**Item: AWS-xx-RA**  
Whip antenna, SMA connector, Right angle  
AWS-BK-RA: 470-700 MHz, black cap  
AWS-GN-RA: 670-870 MHz, green cap  
AWS-BL-RA: 820-1160 MHz, blue cap



**Item: CAL1x**  
Power Cord 2 m. black  
CAL11: USA, NEMA 5-15P / IEC 60320 C5,  
CAL12: Europe, SCHUKO / IEC 60320 C5  
CAL13: UK, UK / IEC 60320 C5



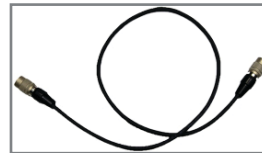
**Item: LBP500**  
Standard Lithium Battery pack 11.25V /  
2.95Ah / 33.20Wh



**Item: LBC500**  
Mini Smart Battery Charger with external  
power supply



**Item: PSP910-H**  
AC/DC Power Supply, Switch Mode with  
Hirose 4 pin connector (to use one "desk-  
top" apparatus alone)  
Input: 100 ÷ 240V ac  
Output: 12V@700mA, 8W, Plug type: EU



**Item: CDC34**  
External power feeding cable  
CDC34: hirose 4pin Male/raw wires (50 cm)  
CDC34HM: hirose 4pin Male/ hirose 4pin  
Male (50 cm)

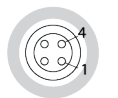
**TECHNICAL SPECIFICATIONS**

SPECIFICATIONS

<b>Audio output</b>	Analogue or digital (SW selectable)
<b>Audio connector</b>	Electronically balanced on 2 mini-XLR 5 pin connectors
<b>Power supply</b>	lithium battery type RRC2040 or thru power supply with Hirose connector 6 ÷ 18 Vdc (3W max)
<b>Powering connector</b>	Hirose 4-pin connector
<b>Battery life</b>	11 hours
<b>Dimensions</b>	5,4 x 8,8 x 11 cm without MCR54, 5,4 x 8,8 x 14 cm with MCR54 (HxWxD)
<b>Weight</b>	330 g. (only BCA54), 755 g. (BCA54 + MCR54 with battery)

**Pinout connection**

**DC**



1 GND  
4 +VDC

6 ÷ 18 Vdc (3 W max)

**RX1-2**



1 GND  
2 CHANNEL1+  
3 CHANNEL1-  
4 CHANNEL2+  
5 CHANNEL2-

2 ch. analogue or  
4 ch. AES3\*  
\*if AES3 enabled on MAIN

**RX3-4**



1 GND  
2 CHANNEL3+  
3 CHANNEL3-  
4 CHANNEL4+  
5 CHANNEL4-

2 ch. analogue

