

CANNON C6

HIGH FIDELITY COAXIAL SPEAKER ENCLOSURE



FEATURES

- 6.5" + 1" Coaxial Transducer
- 5" Passive Radiator
- Bass Response Down to 60 Hz
- 85° Conical Coverage Pattern
- 2-Circuit Input Selector Switch
- IP55 + Salt Water Resistant

APPLICATIONS

- Restaurants
- Hospitality
- Monitors
- Front Fills
- Outdoor Systems

DESCRIPTION

The C6 is a unique point source, coaxial loudspeaker. Each Cannon model utilizes a low frequency driver with a coaxially mounted 1" silk dome high frequency driver. The Cannons' silk dome driver is a purpose-built, ferrofluid-cooled design that enables high sound pressure levels, with improved sound quality, as well as consistency and durability over time. The enclosure also incorporates a rear-facing passive radiator specifically tuned to extend the bass frequency response. These key features allow the C6 to provide the sound quality of a studio monitor.

The C6 has two Speakon connectors and a 2-circuit switch, which allows for a choice between two different amplified signals via a single, 4-conductor cable. The C6 is also available in the passive C6i installation version, which features a screw terminal block connector, as well as the passive C6m version with a marine grade cable gland and all stainless steel 316 metal parts.

SPECIFICATIONS

Audio Specifications

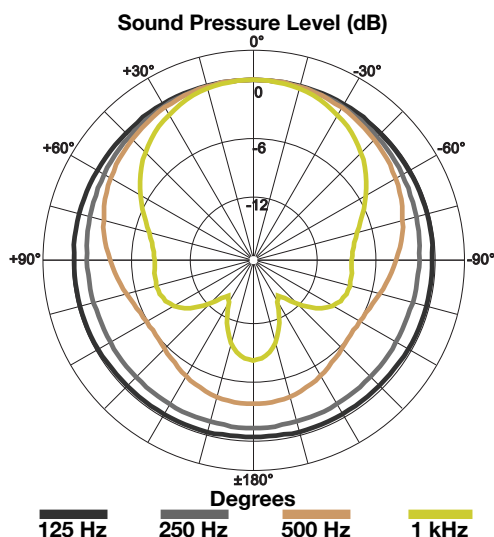
- Description:** Passive 6.5" coaxial with a 5" passive radiator
- Bandwidth:** 60 Hz - 18 kHz (-6 dB)
- Max SPL:** 114 dB SPL @ 1 m w/ preset
- Power:** 240 watts (continuous), 120 watts (AES)
- Directivity:** 85° conical
- Elements:** (1) 6.5" coaxial with a 1" dome high frequency element, (1) 5" passive radiator
- Impedance:** 16 Ω
- Connectors:** (2) NL4, 1+1- (circuit 1), 2+2- (circuit 2) with input selector switch

Mechanical Specifications

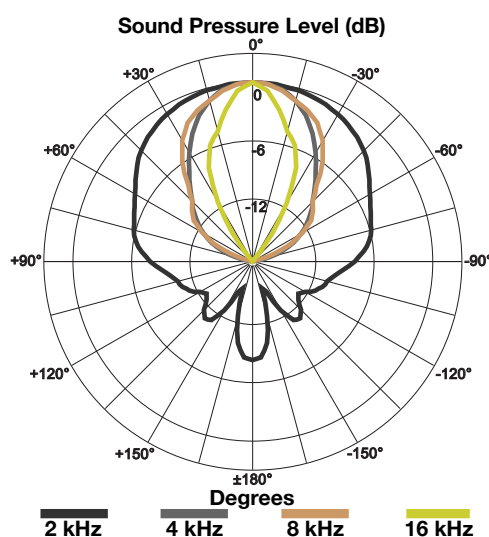
- IP Rating:** IP55 indoor/outdoor and salt water resistant
- Rigging:** (4) M6 points
- Weight:** 10.6 lb / 4.8 kg
- Construction:** Finland birch plywood (phenolic resin), three coats of polyurea, matte salt and UV resistant coating, A4 (316) stainless steel hardware, galvanized and powder-coated black or white steel input plate, 3D spacer mesh fabric
- Dimensions:** 8.4" (214 mm) x 8.4" (214 mm) x 8.2" (208 mm)
- Colors:** Stocking black and white, custom colors and fabrics available
- Accessories:** C-Clamp (wall-, truss-, mic stand- or ceiling-mount), Universal Mounting Plate, Pole Mount Adaptor, L-Bracket, Tube Mount, Swivel Mount

DIRECTIVITY

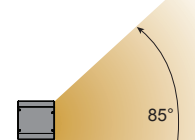
Horizontal Polar Plot LF



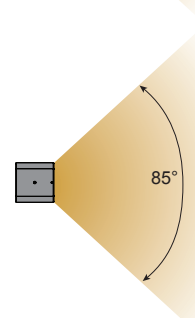
Horizontal Polar Plot HF



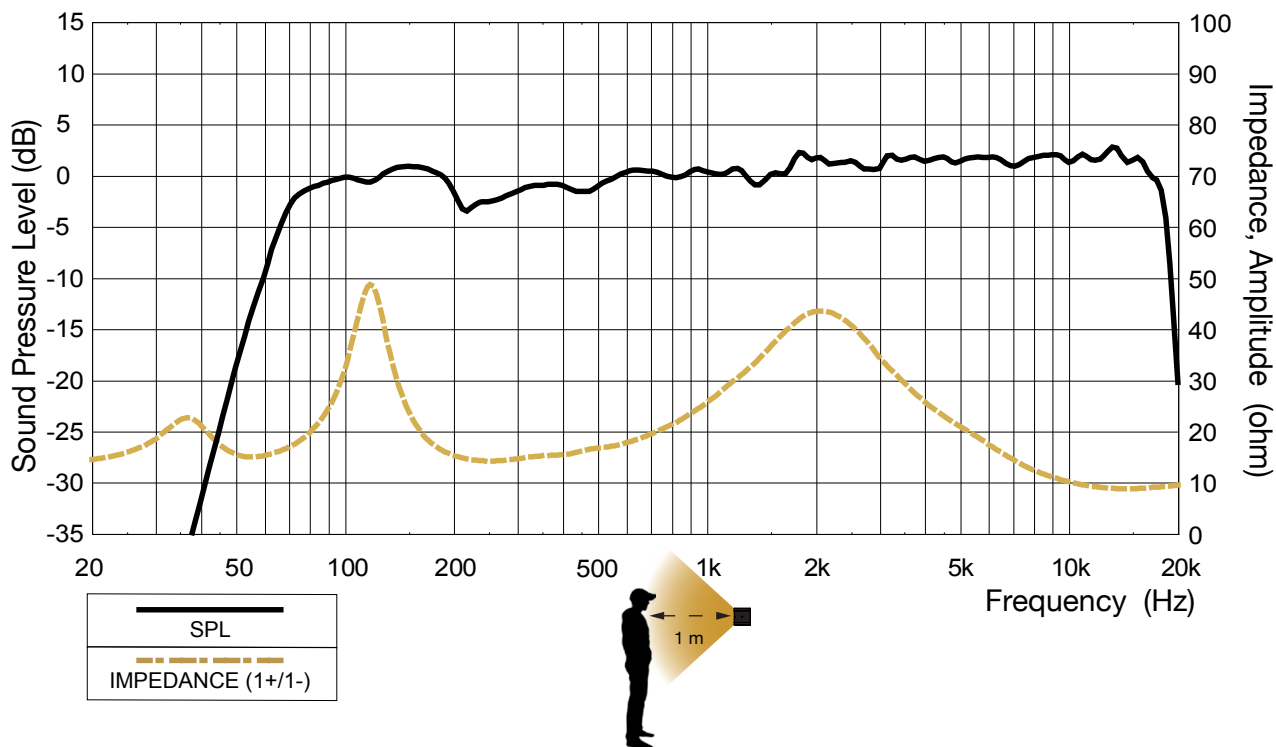
Horizontal



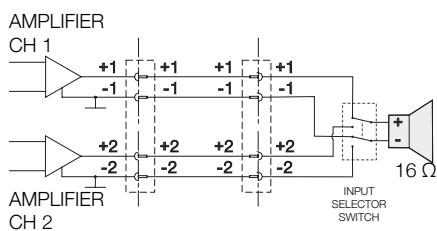
Vertical



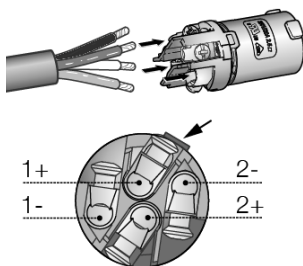
FREQUENCY RESPONSE



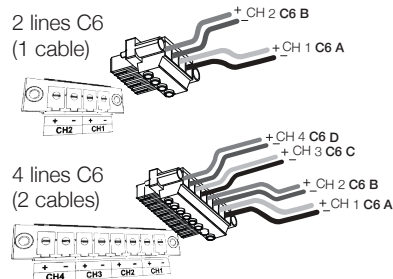
WIRING



(simplified)

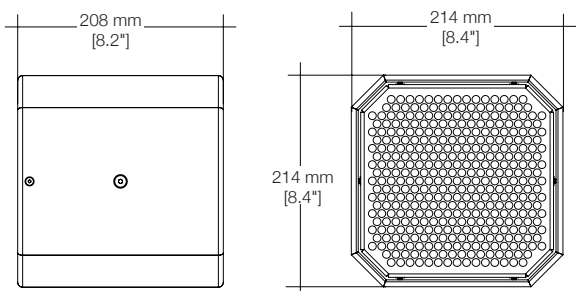


NL4 input/output wiring

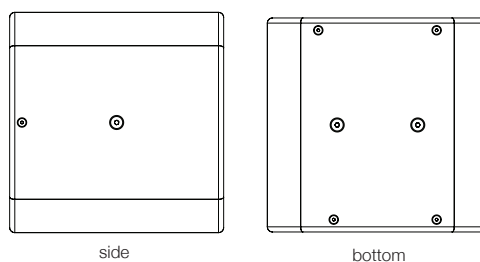


Euroblock 4/8-p amplifier output wiring

DIMENSIONS



RIGGING



- (4) points M6
• Bottom: (2) points M6 – for mounting plate and pole mount
• Sides: (2) points M6 – 1 each side for C-Clamp

ACCESSORIES



Contact

For more product or service information please contact the 1 SOUND headquarters.

1 SOUND, Manufacturer
USA Distributor
34 Apple Street
Tinton Falls, NJ 07724

tel. +1-732-798-9900
sales@1-sound.com

Warranty

All manufactured 1 SOUND products are warranted to be free from defects in materials or workmanship for a period of 3 years from original purchase. If there is specific hardware or grilles you might want replaced or any repairs needed please contact your region's authorized 1 SOUND distributor.

