

CANNON C8

HIGH FIDELITY COAXIAL SPEAKER ENCLOSURE



FEATURES

- 8" Coaxial Transducer
- 7" Passive Radiator
- Bass Response Down to 55 Hz
- 90° × 60° Coverage Pattern
- 2-Circuit Input Selector Switch
- IP55 + Salt Water Resistant

APPLICATIONS

- Restaurants
- Hospitality
- Production Use
- Monitors
- Front Fills
- Outdoor Systems

DESCRIPTION

The C8 is the largest and most powerful Cannon Coaxial model. C8 utilizes an 8" low-frequency driver with a concentrically-mounted compression driver, the latter coupled with a 90° × 60° wave guide, to help focalize the coverage where it is needed and reduce reflections from ceilings or overhangs. The enclosure also incorporates a rear-facing 7" passive radiator specifically tuned to extend the bass frequency response. These features allow the C8 to provide a full-range bandwidth and up to 120 dB SPL, all with high-fidelity sound quality.

The C8 has two Speakon connectors and a 2-circuit switch, which allows for a choice between two different amplified signals via a single, 4-conductor cable. The C8 is also available in the passive C8i installation version which features a screw terminal block connector, as well as the passive C8m version with a marine grade cable gland and all stainless steel 316 metal parts.

SPECIFICATIONS

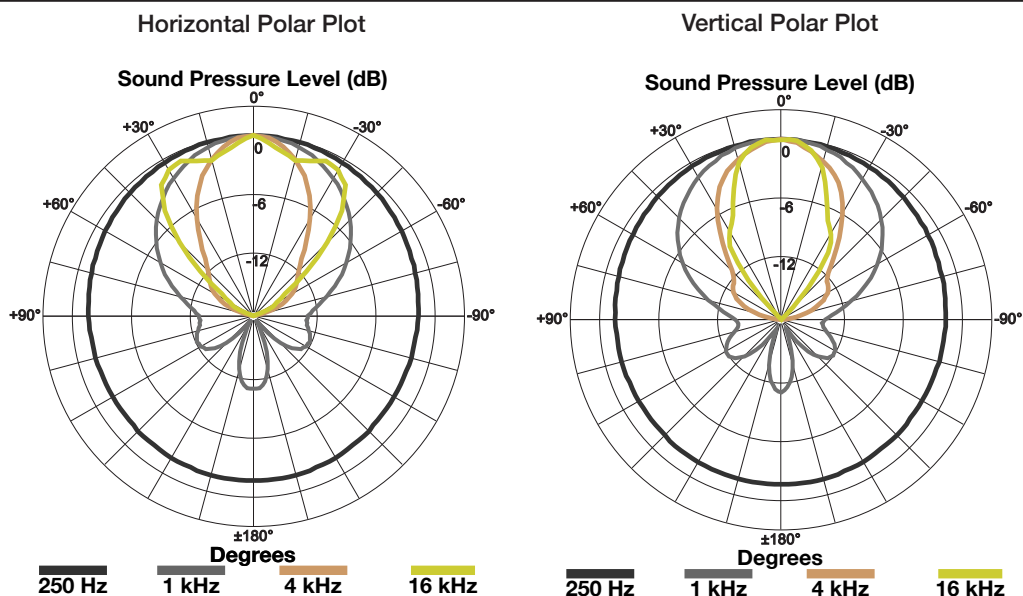
Audio Specifications

- Description:** Passive 8" coaxial with a 7" passive radiator
- Bandwidth:** 55 Hz - 18 kHz (-6 dB)
- Max SPL:** 120 dB SPL @ 1 m w/ preset
- Power:** 400 watts (continuous), 200 watts (AES)
- Directivity:** 90° horizontal × 60° vertical
- Elements:** (1) 8" coaxial with a compression driver high frequency element, (1) 7" passive radiator
- Impedance:** 8 Ω
- Connectors:** (2) NL4, 1+1- (circuit 1), 2+2- (circuit 2) with input selector switch

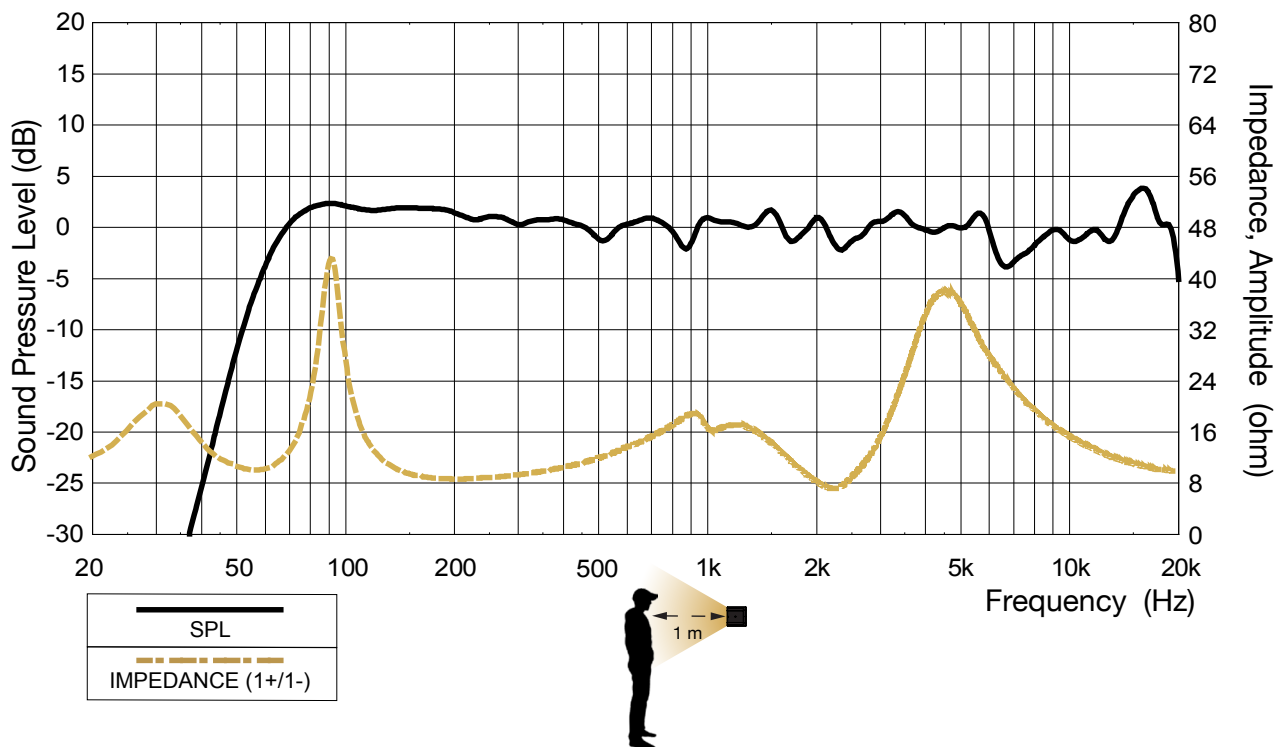
Mechanical Specifications

- IP Rating:** IP55 indoor/outdoor and salt water resistant
- Rigging:** (4) M6 points
- Weight:** 12 lb / 5.4 kg
- Construction:** Finland birch plywood (phenolic resin), three coats of polyurea, matte salt and UV resistant coating, A4 (316) stainless steel hardware, galvanized and powder-coated black or white steel input plate, 3D spacer mesh fabric
- Dimensions:** 10.2" (260 mm) x 10.2" (260 mm) x 10.2" (260 mm)
- Colors:** Stocking black and white, custom colors and fabrics available
- Accessories:** C-Clamp (wall-, truss-, mic stand- or ceiling-mount), Universal Mounting Plate, Pole Mount Adaptor, L-Bracket, Tube Mount, Swivel Mount

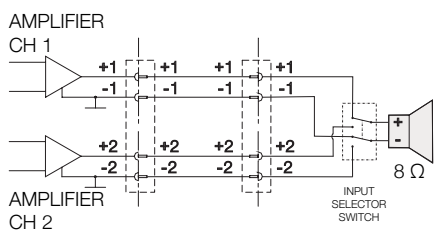
DIRECTIVITY



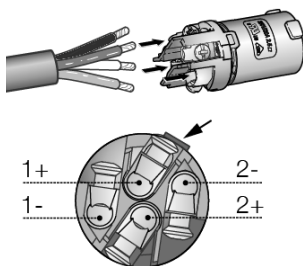
FREQUENCY RESPONSE



WIRING

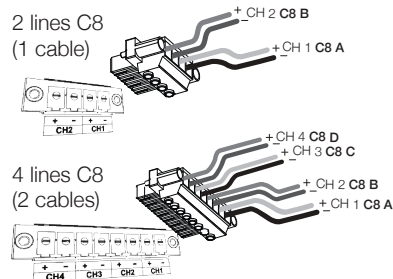


(simplified)



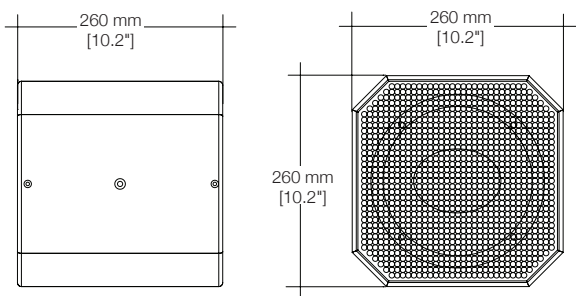
NL4 input/output wiring

Pinout:
 Circuit 1:
 1+ Positive full range
 1- Negative full range
 Circuit 2:
 2+ Positive full range
 2- Negative full range

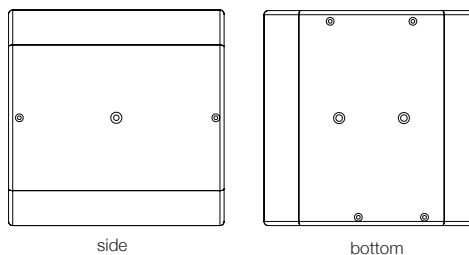


Euroblock 4/8-p amplifier output wiring

DIMENSIONS



RIGGING



- (4) points M6
- Bottom: (2) points M6 – for mounting plate and pole mount
 - Sides: (2) points M6 – 1 each side for C-Clamp

ACCESSORIES



Contact

For more product or service information please contact the 1 SOUND headquarters.

1 SOUND, Manufacturer
 USA Distributor
 34 Apple Street
 Tinton Falls, NJ 07724

tel. +1-732-798-9900
 sales@1-sound.com

Warranty

All manufactured 1 SOUND products are warranted to be free from defects in materials or workmanship for a period of 3 years from original purchase. If there is specific hardware or grilles you might want replaced or any repairs needed please contact your region's authorized 1 SOUND distributor.

