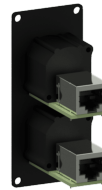


Highlights:

- 1.5 mm thick cold rolled steel frame
- Structured and scratch resistant black powder coating
- Assembly screws included
- Compatible with any CASY chassis
- EtherCON connectors by Neutrik
- Solderless connections
- Flexible system for system integration & connectivity

The CASY168 is fitted with two NE8FAH Ethercon connectors on the front side and two female RJ45 connectors on the back. This flexible structure for system integration & connectivity can easily be implemented in a wide variety of CASY chassis.

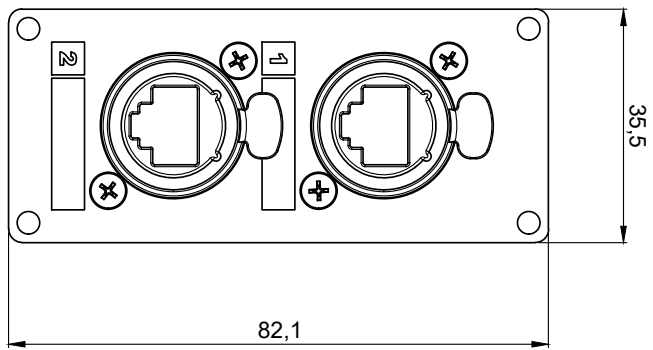



Product Features:

Dimensions	35.5 x 82.1 mm (W x H)	
Weight	0.054 kg	
Connection	2 x Ethercon (NE8FAH) to RJ45	
Module	Space	1

Variants:

- CASY168/B - Black version



	CASY168	Product description: CASY 1 SPACE 2 X ETHERCON TO RJ45	
		Weight: 54 g	Outer dimensions: (w x h x d) 35,5 x 82,1 x 52,5