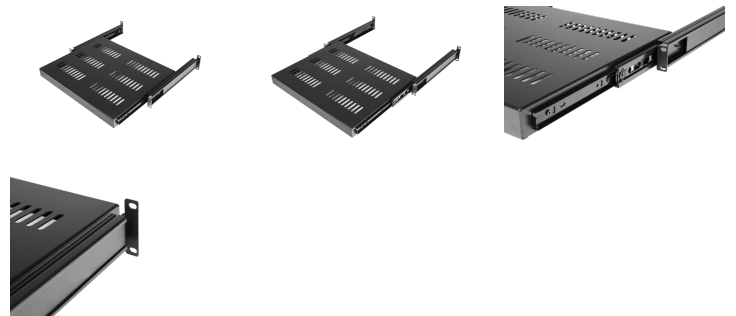
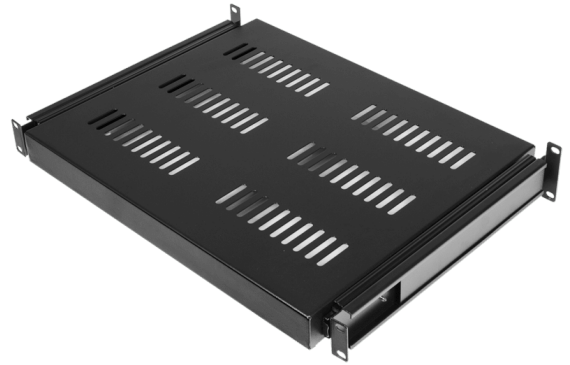


SS160

Sliding shelf for 19" rack cabinet

A 19" sliding shelf made of steel with a thickness of 1,2 mm with a black structural powder coating. The shelf can be used to store equipment which doesn't contain a standard 19" mounting fixture or equipment that needs to be accessed frequently. The SS1xx series sliding shelves come equipped with improved rails for an even larger extension. These smooth sliding shelves provide easy access and secure storage for your custom equipment.



Product Features:

| | |
|-------------------|-------------------------------|
| Dimensions | 484 x 71 x 350 mm (W x H x D) |
| Max. usable depth | 350 mm |
| Weight | 3.5 kg |
| Max. load | 30 kg |

Variants:

- SS160/B - Black version

