

Product information:

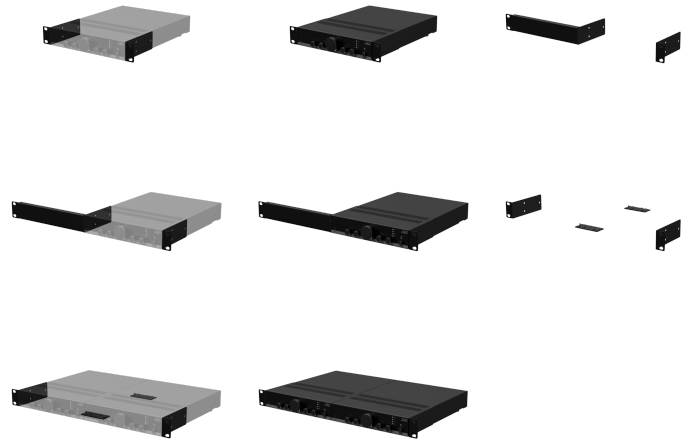
The MBS310 rack mounting set is designed to safely and effectively mount half rackspace devices into 19" or 10.5" racks. The following configurations are possible with this set:

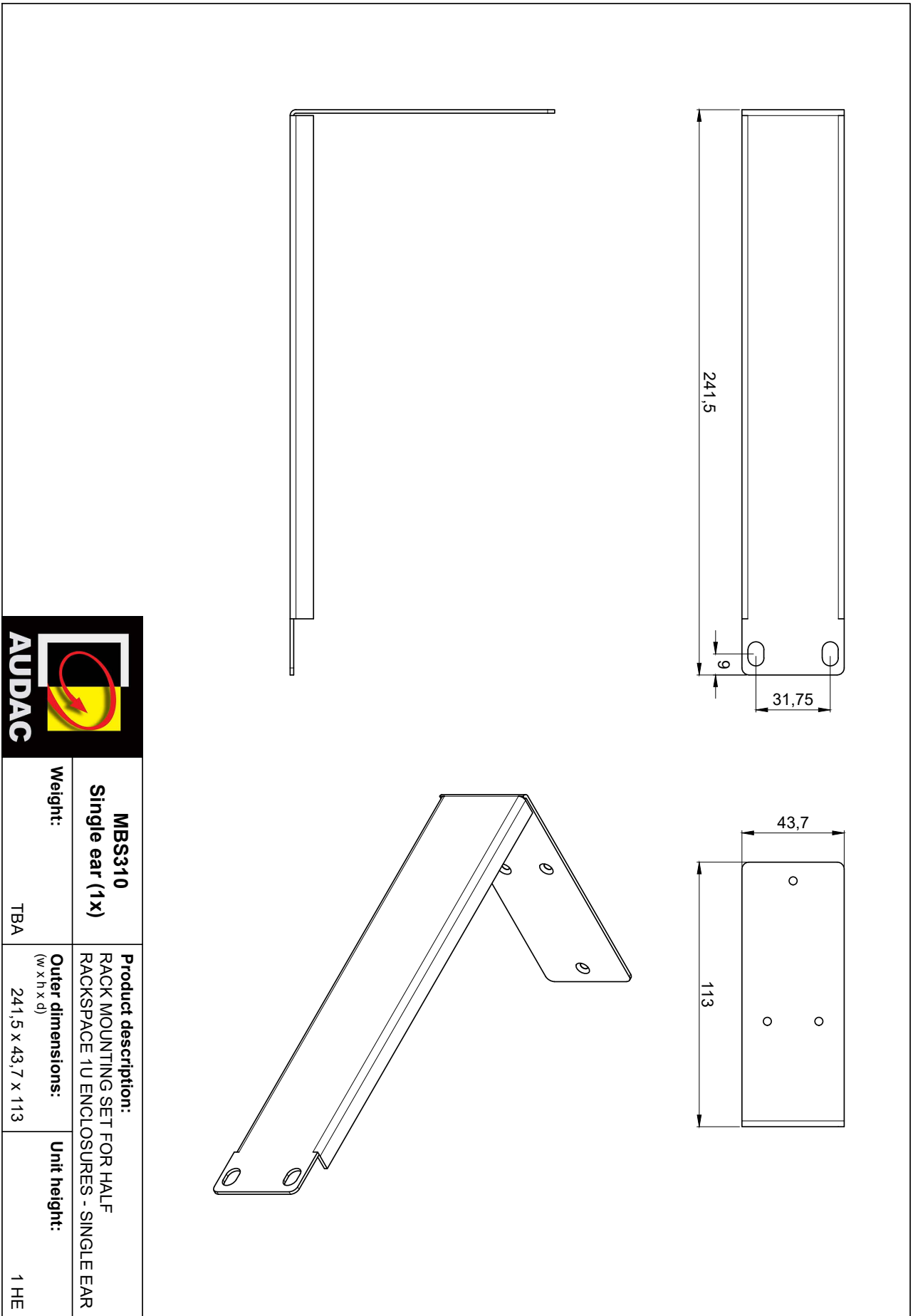
- One half rackspace device in to a 19" rack (1 HE)
- Two half rackspace devices in to a 19" rack (1 HE)
- One half rackspace device in to a 10.5" rack (1 HE)

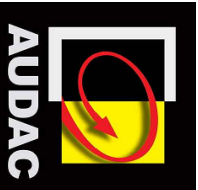
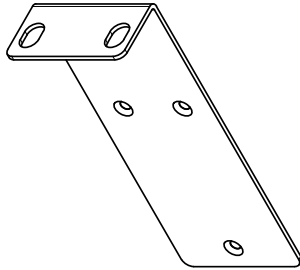
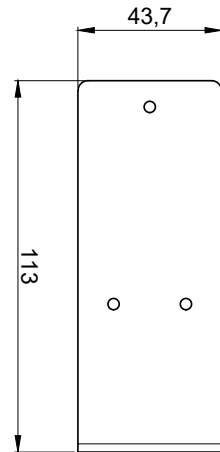
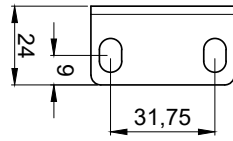


The set contains:

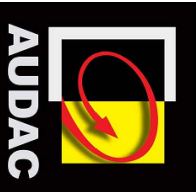
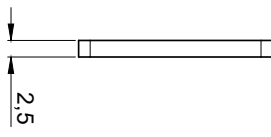
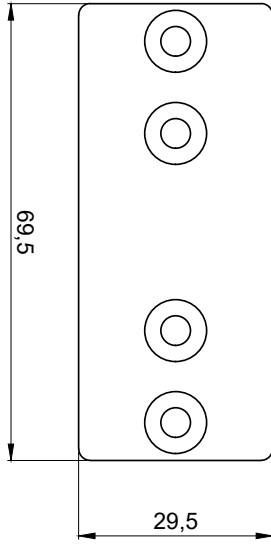
- 1 x single mounting ear
- 2 x double mounting ears
- 2 x couplers
- 8 x screws M4 x 6mm







MBS310 Double ear (2x)	Product description: RACK MOUNTING SET FOR HALF RACKSPACE 1U ENCLOSURES - DOUBLE EAR	Unit height: 1 HE
Weight: TBA	Outer dimensions: <small>(w x h x d)</small> 24 x 43,7 x 113	



MBS310 Coupler (2x)	Product description: RACK MOUNTING SET FOR HALF RACKSPACE 1U ENCLOSURES - COUPLER	
Weight: TBA	Outer dimensions: <small>(w x h x d)</small> 69,5 x 29,5 x 2,5	Unit height: N/A