

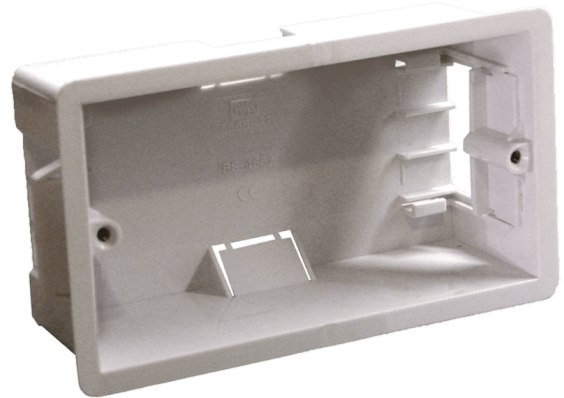


WB50/FG

Flush mount box for AUDAC wallpanel - hollow wall

Product information:

The WB50 are wall boxes for mounting AUDAC wall control panels such as the DW5066, MWX65 and WP523. The /FG is the white plastic version that is meant for flush mounting in Gypsum walls.



Product Features:

Material	ABS
Dimensions	144.5 x 83.5 x 47.5 mm (W x H x D)
Cut-out measurement	135 x 75 mm

Shipping & Ordering:

Shipping volume	0.0027 Cbm
-----------------	------------