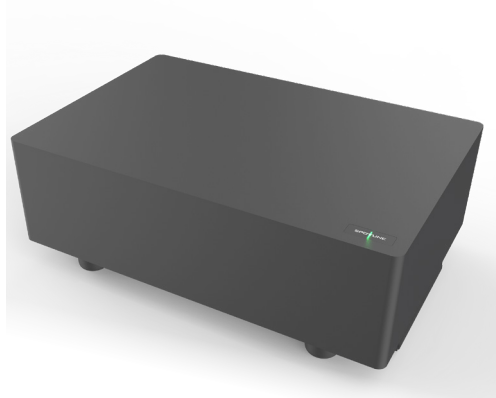




WIRELESS SUBWOOFER

Spottune SUB is a wireless subwoofer, designed to be set up in minutes and used in combination Spottune Omni speakers, and addition to your spottune system. The Subwoofer can be placed on the floor, wall or ceiling mounted, and is wirelessly connected to Spottune stream.



TECHNICAL SPECIFICATIONS

Colors	White / Black / Grey
Specifications	Wireless Smart Subwoofer 200 Watt high efficiency digital Class-D power amplification 10 Inch (250 mm) long stroke driver with extended linear excursion. Closed box design for optimum performance and extended low-frequency performance.
Frequency	Audio frequency range 20-200Hz Cutoff variable low pass digital filters: 60, 80, 100, 120, 160 and 200Hz
Amplification	~200W class D amplifier Max SPL 100dB
Wireless Features	Audio-BroadCasting-Digital - Technology RF-Band 1,8 -1,9 GHz Range up to 50-100m (Condition dependent)
Controls	Wireless input Volume, Zone 1 & 2 AUX input
Dimensions	Height: 200 mm Width: 360 mm Length: 540 mm
Weight	12 Kg
Power	100 - 240V 50/60Hz
Standby power consumption	1,4 W
SKU	W1 - F - B, W1 - F - G, W1 - F - W

