



ADMIRAL
STAGING

MEAT- RACK

Store and transport your moving heads, lighting bars and single luminaires with our Meatrack cart. Depending on the amount and size of your fixtures, you can build your ideal Meatrack in your desired height and length. Choose hanging tubes, in aluminum or steel, to create the desired storage space for your fixtures.



KEY FEATURES

Design your own cart

Build your perfect Meatrack step-by-step by choosing the most suitable height, length and amount of hanging tubes.

Efficient design

Pre-drilled holes in the side panels allow you to place the hanging tubes at any height and thus, maximize the use of space.

Flexible setup

Adjust the height, amount and position of the hanging tubes based on the type and number of fixtures you need for a specific job.

www.admiralstaging.com

TECHNICAL DATA

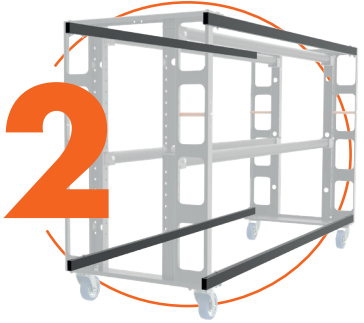


1 CHOOSE SIDE PANELS

Fork-side panel set of 2

| | | | | |
|----------------------|---------------------|----------|----------|----------|
| Heights available: | 110 cm | 110 cm | 203 cm | 203 cm |
| Article code: | WAFSF11A | WAFSF11B | WAFSF21A | WAFSF21B |
| With centre bracket: | no | yes | no | yes |
| Material: | powder coated steel | | | |

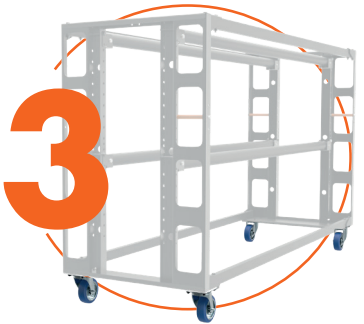
* boltset included



2 CHOOSE LENGTH PROFILES

Length profiles set of 4

| | | | | |
|--------------------|---------------------|----------------|----------------|----------------|
| Lengths available: | 80 cm | 160 cm | 180 cm | 210 cm |
| Article code: | WALPSL080 | WALPSL160 | WALPSL180 | WALPSL210 |
| Dimensions mm: | 773 x 20 x 40 | 1588 x 20 x 40 | 1773 x 20 x 40 | 2073 x 20 x 40 |
| Material: | powder coated steel | | | |



3 CHOOSE CASTORS

Castors set of 4

| | | |
|-----------------|--|-----------------------|
| Sets available: | 2 x Swivel with brake 2 x Swivel no brake | 4 x Swivel with brake |
| Article code: | WACS100B | WACS100A |
| WLL: | 160 kg per castor | 160 kg per castor |
| Diameter: | 100 mm | 100 mm |
| Sets available: | 2 x Swivel with brake 2 x Swivel no brake | 4 x Swivel with brake |
| Article code: | WACS125B | WACS125A |
| WLL: | 200 kg per castor | 200 kg per castor |
| Diameter: | 125 mm | 125 mm |

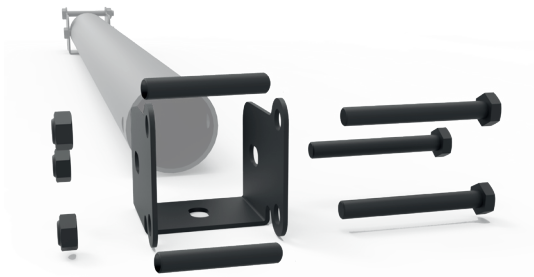


4 CHOOSE HANGING TUBES

Hanging tubes with forkset

| | | | | |
|--------------------|-----------------|-----------------|-----------------|---------------------|
| Lengths available: | 80 cm | 160 cm | 180 cm | 210 cm |
| Article code: | WARTS0080 | WARTS0160 | WARTS0180 | WARTS0210 |
| WLL: | 100 kg per tube | 100 kg per tube | 100 kg per tube | 100 kg per tube |
| Material: | black aluminium | black aluminium | black aluminium | powder coated steel |
| Diameter: | 50 Ø mm | 50 Ø mm | 50 Ø mm | 48 Ø mm |

* 2 x Meatrack forkset 50 mm with bolts included

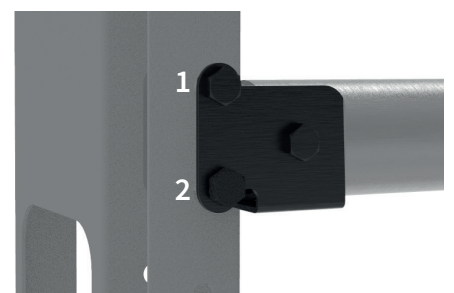


*boltset is included in all 4 sets

The Meatrack has maximum load of 400 kg, with each hanging tube able to handle up to 100 kg.

Keep in mind that when assembling the Meatrack, each fork set should be attached with two bolts onto the panels.

To prevent the Fork-side panels from bending due to overtightening the fork sets, we recommend using spacer tubes during the installation of the hanging tubes.





Centre bracket set

| | | |
|--------------------|---------------------|---------|
| Heights available: | H110 | H203 |
| Article code: | WAM2P03 | WAM2P05 |
| Dimensions : | 930 mm | 1860 mm |
| Material: | powder coated steel | |

* centre brackets can be purchased separately and mounted on fork-side panels without one
 ** centre bracket set includes screws

