



ADMIRAL
STAGING

MEAT- RACK

Store and transport your moving heads, lighting bars and single luminaires with our Meatrack cart. Depending on the amount and size of your fixtures, you can build your ideal Meatrack in your desired height and length. Choose hanging tubes, in aluminum or steel, to create the desired storage space for your fixtures.



KEY FEATURES

Design your own cart

Build your perfect Meatrack step-by-step by choosing the most suitable height, length and amount of hanging tubes.

Efficient design

Pre-drilled holes in the side panels allow you to place the hanging tubes at any height and thus, maximize the use of space.

Versatile height options

Choose the 183 cm height for easy transport in a van or through low doorways without compromising storage space.

www.admiralstaging.com

TECHNICAL DATA



1 CHOOSE SIDE PANELS

Fork-side panel set of 2 (width 60 cm)

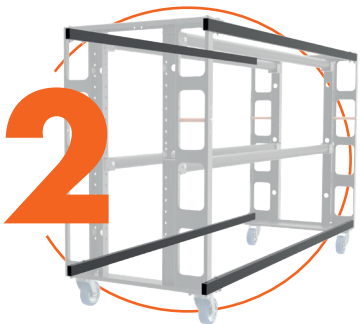
Heights available:	110 cm	110 cm	183 cm	183 cm	203 cm	203 cm
Article code:	WAFSF11A	WAFSF11B	WAFSF15A	WAFSF15B	WAFSF21A	WAFSF21B
With centre bracket:	no	yes	no	yes	no	yes
Material:	steel					
Finish:	powder coated					

* boltset included

Fork-side panel set of 2 (width 80 cm)

Heights available:	--	--	183 cm	183 cm	203 cm	203 cm
Article code:	--	--	WAFSF17A	WAFSF17B	WAFSF31A	WAFSF31B
With centre bracket:			no	yes	no	yes
Material:	steel					
Finish:	powder coated					

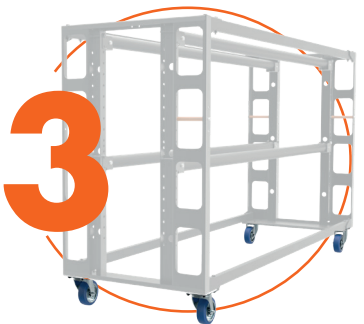
* boltset included



2 CHOOSE LENGTH PROFILES

Length profiles set of 4

Lengths available:	80 cm	160 cm	180 cm	210 cm
Article code:	WALPSL080	WALPSL160	WALPSL180	WALPSL210
Dimensions mm:	773 x 20 x 40	1588 x 20 x 40	1773 x 20 x 40	2073 x 20 x 40
Material:	steel			
Finish:	powder coated			



3 CHOOSE CASTORS

Castors set of 4

Sets available:	2 x Swivel with brake 2 x Swivel no brake	4 x Swivel with brake
Article code:	WACS100B	WACS100A
WLL:	160 kg per castor	160 kg per castor
Diameter mm:	Ø 100	
Sets available:	2 x Swivel with brake 2 x Swivel no brake	4 x Swivel with brake
Article code:	WACS125B	WACS125A
WLL:	200 kg per castor	200 kg per castor
Diameter mm:	Ø 125	

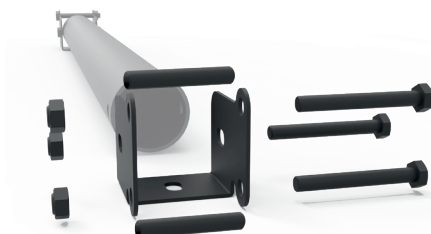


4 CHOOSE HANGING TUBES

Hanging tubes with forkset

Lengths available:	80 cm	160 cm	180 cm	210 cm
Article code:	WARTS0080	WARTS0160	WARTS0180	WARTS0210
WLL:	100 kg per tube	100 kg per tube	100 kg per tube	100 kg per tube
Material:	black aluminium	black aluminium	black aluminium	powder coated steel
Diameter mm:	Ø 50	Ø 50	Ø 50	Ø 48

* 2 x Meatrack forkset 50 mm with bolts included

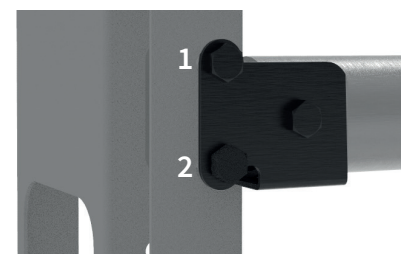


*boltset is included in all 4 sets

The Meatrack has maximum load of 400 kg, with each hanging tube able to handle up to 100 kg.

Keep in mind that when assembling the Meatrack, each fork set should be attached with two bolts onto the panels.

To prevent the Fork-side panels from bending due to overtightening the fork sets, we recommend using spacer tubes during the installation of the hanging tubes.



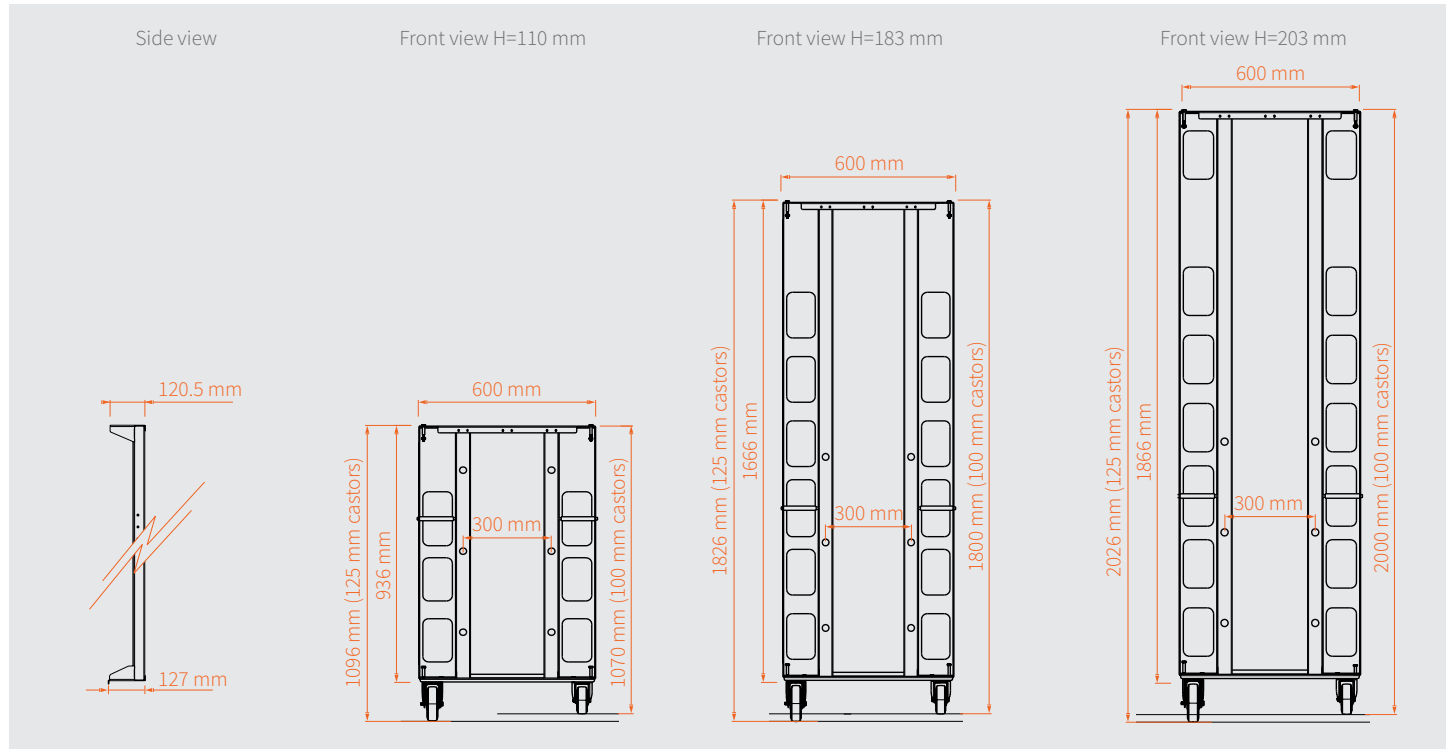


Centre bracket set

Heights available:	H110	H183	H203
Article code:	WAM2P03	WAM2P04	WAM2P05
Dimensions mm :	936	1666	1866
Material:	steel		
Finish:	powder coated		

* centre brackets can be purchased separately and mounted on fork-side panels without one
 ** centre bracket set includes screws

Panel without centre brackets W=600 mm



Panel without centre brackets W=800 mm

