



Type(s)

Project

Date

Notes

GENERAL INFORMATION

With High End Systems Halcyon Silent, ETC raises the bar for what users can expect from fanless automated luminaires. For acoustically sensitive venues like theatres or concert halls, Halcyon Silent provides fanless operation without compromising output or features. The convection-cooled fixture packs 18,400 lumens of output in a 91 pound frame. Halcyon Silent’s patented ADM system features twelve color flags to increase color brightness and saturation while decreasing color shift. Design possibilities are endless with full-curtain framing, a host of gobos, a Trifusion system for even frost distribution, and a continuously rotating animation wheel.

Applications

- Concert Halls
- Opera Houses
- Theatres
- Lecture Halls
- TV Studios

Product Features

- Bright white LED engine
- 580 W High Fidelity engine
- Fixture output exceeding 18,400 lumens
- High quality 13-lens optic system
- Extremely powerful 5.5°–60° zoom
- Advanced Dichroic Mixing System utilizing 12 color flags with simplified combined color modes
- Six-position plus open color wheel
- Full-curtain framing system for total control of beam shaping
- 16-blade iris for extremely tight beam effects
- Trifusion frost system with linear insertion from light to heavy and everything in between
- Two, 7-position plus open Rotating Gobo Wheels
- Dual prisms for with individual insertion for beam and projection effects
- Rotating Animation Wheel with linear positioning and angular control
- Patented Whisper Home technology for quiet pan and tilt calibration/homing at boot with minimal movement

ORDERING INFORMATION

Model	Description
HAL-S-HF-MI	Halcyon Silent, Black, High Fidelity in Recycleable Foam Packaging, Boxed

Color Options: Fixtures ship standard in black. White available by request.
Included Accessories: Fixture includes two (2) 180 mm three-hole Omega brackets, one (1) fixture power cord, bare ends to powerCON® TRUE1® TOP input, and a safety cable.

Accessories

Model	Description
HAL-S-SNOOT	Top Hat, Snoot for Halcyon Silent
2500B7029-A	Fixture Power Cord Upgrade, 5 ft TRUE1 TOP to Parallel Blade U-Ground (Edison)
2560B7005	Fixture Power Cord Upgrade, Stage Pin to powerCON TRUE1 TOP, 20 A
2560B7006	Fixture Power Cord Upgrade, L6-20 to powerCON TRUE1 TOP, 20 A
2560B7007	Fixture Power Cord Upgrade, L5-20 to powerCON TRUE1 TOP, 20 A
67040007	MegaClaw™
55040014	Cheeseborough 2" Alloy 1/2 Coupler Truss Clamp
67040010	Mini-Claw™



PRODUCT SPECIFICATIONS

Source

Engine	Custom High Fidelity White LED Engine
LED Details	580 W
Field Lumens	See photometrics on page 4
Max Integrating Sphere Lumens	18,400
LPW	37
LED Life	50,000 hours
Native CCT	5800 K

Color

Color Mixing	Patented 12-flag Advanced Dichroic Mixing System with combined CMY and individual mode
Color Temperature	Variable from 2200 K to 10000 K via CCT channel
Color Wheel	Six (6) dichroic colors plus open

Optical

Beam Angle Range	5.5°–60°
Gate Size	26 mm
Aperture Size	144 mm
Pattern Projection	Two rotating and indexable wheels with seven (7) interchangeable patterns plus open on each
Animation	- Bi-directional rotating animation wheel with linear insertion, and variable angle - LED Animation
Prism	Five-facet star and four-facet linear rotating prism with individual insertion
Diffusion	Light, Medium, and Heavy frost seamlessly controlled with Trifusion control
Iris	16-blade iris
Framing	Four-plane, full-curtain framing system with 180° module rotation
Flicker Control/Hz Range	2.4 kHz and 16 kHz

Control

Input Method	DMX (5-pin) or Ethernet
Protocols	DMX via RS-485 Art-Net or sACN via Ethernet
Ethernet Pass-Thru	Passive Ethernet in and thru with and without power
Data Conversion	Patented data conversion system for Ethernet to DMX
Modes (Footprint)	Standard or Combined (61 channels)
RDM Functions	Yes
UI Type	Full-color graphical UI with touch screen and 5-button navigational control NFC Configuration
Local Control	Yes
Dimming Performance	16-bit, DMX controlled

Electrical

Voltage Range	100–240 V 50–60 Hz
Input Method	powerCON TRUE1 TOP
Wattage	931 W
Current (Max)	9.35 A @ 100 V 3.69 A @ 240 V
Inrush (First Half Cycle)	120 V: 88 A 230 V: 94 A
Fixtures per Circuit	1 fixture (R20 module or similar) Note: TRUE1 TOP connector rated for 20 A (120 V/60 Hz) and 16 A (240 V/50 Hz)

Thermal

Ambient Operating Temp	-10° to 35°C (14° to 95°F)
Fan Mode	No fans, convection cooled

Physical

Pan and Tilt Range	540° pan, 260° tilt
Max Pan/Tilt Speed	360° in 2.15 s/180° in 1.74 s
Encoders	Whisper Home, absolute encoders
Materials	Steel and aluminum frame with molded plastic covers
Color Options	Black, white by request
Mounting Options	Any orientation
IP Rating	IP20
Weight	41.3 kg (91 lb)
Included Accessories	powerCON TRUE1 TOP to bare end fixture tail Two (2) 180 mm three-hole Omega brackets Safety cable

Warranty

Fixture Warranty	Five (5) years for light engine Two (2) years for complete fixture
Warranty Details	etcconnect.com/Support/Warranty.aspx

Regulatory & Compliance

Approved regulatory standards	cETLus Listed Listed to UL 1573 Certified to CSA STD. C22.2 No: 166 CE Compliant UKCA Compliant
Complies to the ROHS directive	Yes

Safety

Safety	Minimum distance to illuminated surface = 2.0 m (6.6 ft) Minimum distance from fixture head to combustible materials = 0.1 m (4.0 in)
--------	------------------------------------------------------------------------------------------------------------------------------------------

Notes: All LED sources experience some lessening of light output and some color shift over time. LED output will vary with thermal conditions. Thermal conditions can be affected by ambient temperatures and orientation.

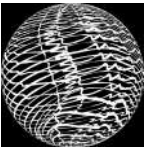
FEATURE DETAILS

Rotating Gobo Details

Outside Diameter	29.9 mm (1.17 in)
Image Diameter	21 mm (0.82 in)
Materials	0.5 mm aluminum 1.1 mm glass Borofloat®

Rotating Gobo Wheel 1

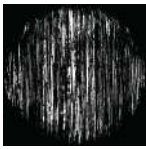
1 - Wiggle Lines



2 - Mycelium



3 - Bob's Brush



4 - The Claw



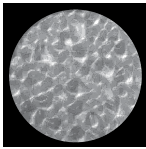
5 - Cut Cone



6 - Split-S

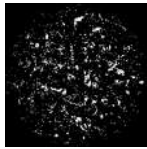


7 - Ice

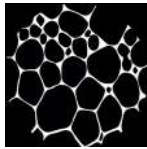


Rotating Gobo Wheel 2

1 - Texture Drops



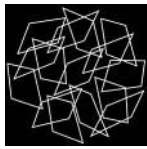
2 - Lovely Bubbly



3 - Art Ducko



4 - Window Matrix



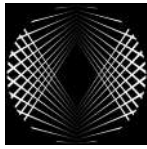
5 - Swirly Gig



6 - Fenced In

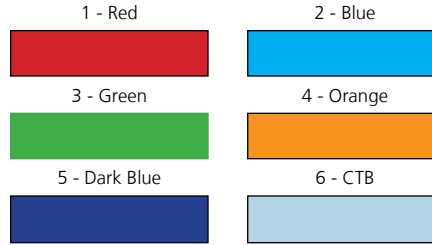


7 - The Only Way Is Up



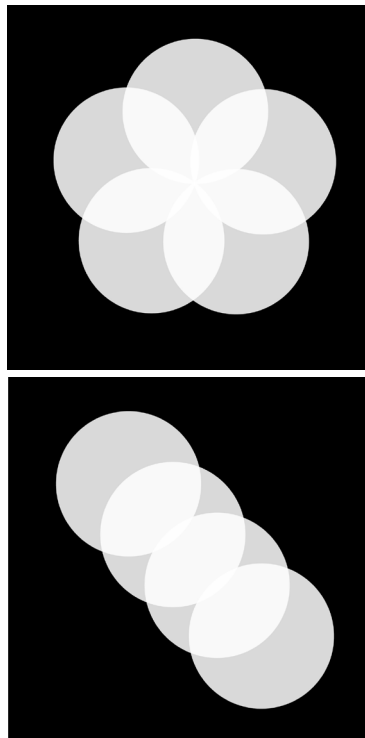
Color Wheel Details

Shape	Interchangeable wedge
Materials	1.1 mm glass Borofloat



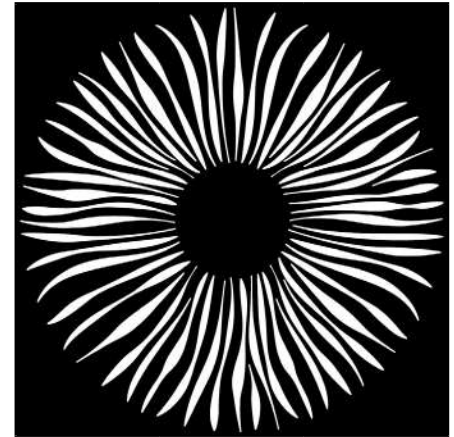
Prism Details

Movement	Two prism flags with individual insertion
Materials	Molded optical glass



Animation Wheel Details

Movement	Bi-directional continuous rotation Linear insertion with 80° angular path range
Materials	0.8 mm aluminum



PHOTOMETRIC DATA

Halcyon Silent - High Fidelity

	Degree	Candela	Field Lumens	Power Usage	Lumens Per Watt
Narrow	5.5°	724,199	6,236	580 W	11
Medium	26°	114,035	18,364	580 W	32
Wide	60°	20,556	17,304	580 W	30

Narrow - 5.5°

Throw Distance	10 ft 3.0 m	20 ft 6.1 m	30 ft 9.1 m	50 ft 15.2 m	200 ft 61 m
Field Diameter	1 ft 0.31 m	1.9 ft 0.58 m	2.9 ft 0.89 m	4.8 ft 1.47 m	19.2 ft 5.86 m
Illuminance (fc)	7,409	1,853	824	297	19
Illuminance (lux)	79,714	19,928	8,857	3,189	199

Medium - 26°

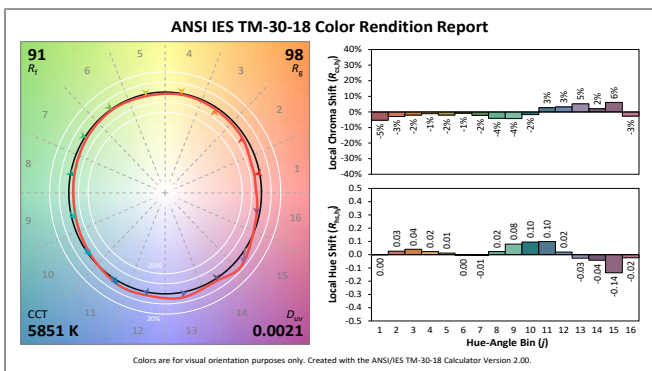
Throw Distance	10 ft 3.0 m	20 ft 6.1 m	30 ft 9.1 m	50 ft 15.2 m	200 ft 61 m
Field Diameter	4.6 ft 1.41 m	9.2 ft 2.81 m	13.9 ft 4.24 m	23.1 ft 7.05 m	92.3 ft 28.14 m
Illuminance (fc)	1,142	286	127	46	3
Illuminance (lux)	12,279	3,070	1,364	491	31

Wide - 60°

Throw Distance	10 ft 3.0 m	20 ft 6.1 m	30 ft 9.1 m	50 ft 15.2 m	200 ft 61 m
Field Diameter	11.5 ft 3.51 m	23.1 ft 7.05 m	34.6 ft 10.55 m	57.7 ft 17.59 m	230.9 ft 70.38 m
Illuminance (fc)	205	52	23	9	1
Illuminance (lux)	2,198	549	244	88	5

To determine center beam illumination in footcandles at any throw distance, divide candela by the throw distance squared.

Metric conversions: For meters, multiply feet by 0.3048.
For lux, multiply footcandles by 10.76.



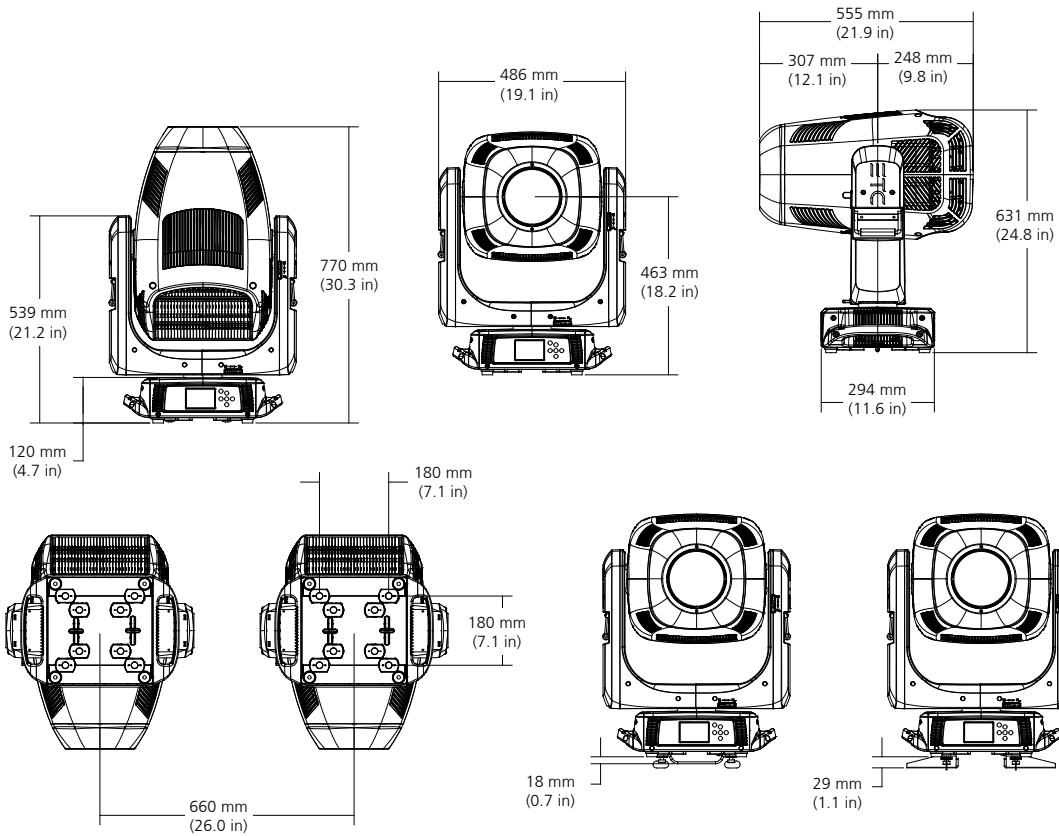
Additional Color Metrics	
CRI R _a (R ₉)	93 (64)
TLCI	93

Product Dimensions

Model	Height		Width		Depth		Weight	
	in	mm	in	mm	in	mm	lb	kg
Halcyon Silent**	30.3	770	19.1	486	11.6	294	91.0	41.3
Halcyon Silent in Box with Foam Insert	35.8	910	24.4	620	20.4	520	109.3	49.6

**Does not include mounting hardware

Halcyon Silent



Power Table

VAC	Amps	Hz	Watts	VA	PF
100	9.4	50	931	942	0.99
120	7.5	60	904	907	0.99
200	4.4	50	870	887	0.98
208	4.2	60	864	876	0.97
220	3.9	50	851	876	0.97
230	3.9	50	867	873	0.97
240	3.7	60	858	890	0.96

ADDITIONAL ORDERING INFORMATION

Additional Accessories

Model Number	Description
2599A2001	Omega bracket, 180 mm three-hole (included)
H7150008	Omega bracket, 180 mm single-hole



Corporate Headquarters • Middleton, WI USA

Global Offices • London, UK • Rome, IT • Holzkirchen, DE • Paris, FR • Hong Kong
Dubai, UAE • Singapore • New York, NY • Orlando, FL • Los Angeles, CA • Austin, TX

©2024 ETC. All Rights Reserved. All product information and specifications subject to change. Rev A 2024-11

*Trademark and patent info: etconnect.com/IP • Third-party license agreement info: etconnect.com/licenses

etconnect.com